



2017.05.04

PRISM 35D: THE STORY OF A UNIQUE CUSTOM-MADE ESSILOR LENS

Another manufacturing record from Essilor's Special Lens laboratory. Explore how a unique lens is helping someone with exceptional visual needs to see comfortably again.

Accidents that cause irreversible damage to vision can be life-changing as Mr Ptáček, an eyeglasses wearer from the Czech Republic discovered. Following a car accident in 2012, he was left with a combination of severe visual problems, affecting his ability to work and daily social interactions. Essilor, through close teamwork by specialists across the Group, succeeded in designing and developing a ground-breaking solution to fit Mr Ptacek's specific needs - a 35D prismatic lens that significantly decreases his visual discomfort from double vision.

This unique achievement became a real optical solution for Mr Ptáček thanks to the perseverance and ingenuity of production and customer service teams from Essilor's Special Lenses laboratory working with specialists from the Group's R&D and Instruments Division. The lens is the result of numerous tests, prototypes and new processes implemented to push the limits of what was technically possible and help enhance Mr Ptáček's vision to almost 95%.



Essilor has a Special Lenses (SL) Lab in Ligny-en-Barrois, France, with a team of people dedicated to designing and manufacturing special lenses. These are often made by hand and require many hours work combining the latest optics expertise with specific manufacturing techniques to create a truly personalized solution. Some 7 million people worldwide have extreme ametropia that requires special lenses. Per country their numbers may be small but their need is great.

SEE ALSO

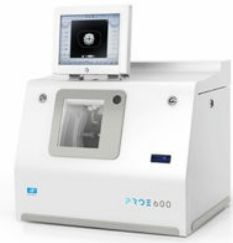
2017.03.30

INNOVATION

PRODUCTS

ESSILOR INSTRUMENTS INNOVATION FOR HIGH-VOLUME EDGING

In March this year Essilor Instruments launched its new compact high-volume edger – Pro-E 600. We look at the customer benefits of this new innovation.

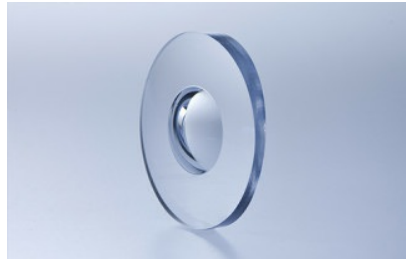


2016.04.27

CORPORATE

INNOVATION

**ESSILOR AIMS TO BOOST
INDUSTRY EXPERTISE IN
MEETING SPECIAL VISUAL
NEEDS**



Essilor is launching a new European training program designed to help eyecare professionals better support the needs of individuals with out-of-the-ordinary problems who require special lenses to correct their vision.